

**Vertical Screen Test**  
**IACUC Standard Procedure**  
**Effective Date: October 2021**

**Description of Procedure:**

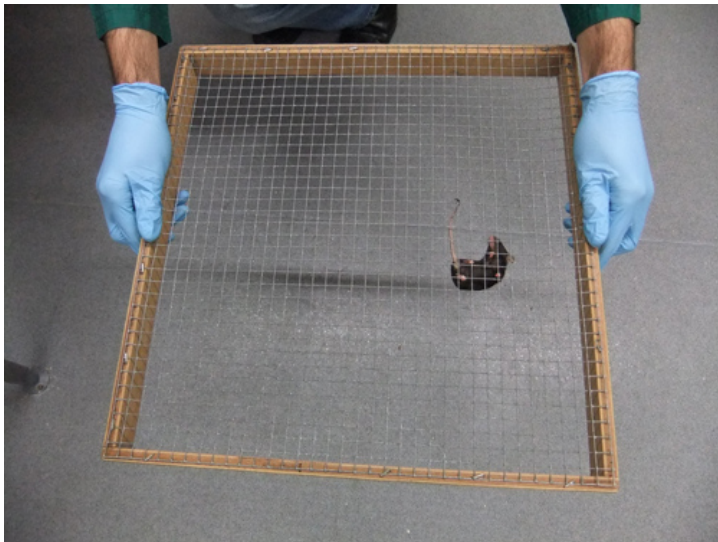
The vertical screen test measures the climbing response of a mouse.

**Supplies:**

- Wire mesh screen (15x15 cm, each mesh square 1x1 cm)

**Procedure Steps:**

1. Place animal at one end of the wire mesh screen.
2. Slowly rotate screen to a vertical position.
3. Note whether or not the animal shows a climbing response.



See JOVE: Deacon, R. M. J. Measuring the Strength of Mice.  
*J. Vis. Exp.* (76), e2610, doi:10.3791/2610 (2013)